

UNITY & UNITY+

OPERATION MANUAL



CONTENTS	3
MANUAL REVISIONS	5
GENERAL INFORMATION	6
Hazard intensity levels	6
Warnings	6
Introduction	7
Precautions	10
Intended use	10
User groups	10
Possible types of misuse	11
Installation notes	11
Electrical connection notes	11
Warm connection requirements	12
Refrigeration system information	13
Safe milk handling reminders	14
Disassembly and disposal	15
Disposal and scrapping	15
Compliance code calculator	16
Dispenser specifications	18
COMPONENT OVERVIEW	19
ESI4/18_BTБ_FM_U_IN	19
Dimensions	19
Front View	20
Front View, doors open	20
ESI4/18_BTБ_IN	21
Dimensions	21
Front View	22
Front View, doors open	22
INSTALLATION	23
Initial set up and installation	23

OPERATION35

- Adjust slider35
- Make a drink.....35
- Fill coffee.....36
- Fill ingredients.....36
- Fill FMU37

DAILY CLEANING AND CARE.....39

- Empty drip tray.....39
- Empty waste bin.....40
- Run rinsing cycle41
- FMU cleaning.....42

WEEKLY CLEANING AND CARE46

- Clean brewers with tablet46

ON SCREEN MESSAGES AND ALERTS48

- Dispenser error messages48
- Dispenser error messages49
- Dispenser error messages50
- FMU error messages.....51

MANUAL REVISIONS

Rev. #	Date	TSB#	Description
01	April 15, 2019	None	First draft released for initial review by Crem Technical Dept.
02	June 17, 2019	None	Add step-by-step installation instructions.
03	July 24, 2019	None	Modify instructions to improve ease of installation.
04	Aug. 19, 2019	None	Add additional information regarding FMU to MAIN connection.
05	Sept. 10, 2019	None	Update compliance codes according to CB Cert
06			
07			
08			
09			
10			

Hazard intensity levels

There are four different levels of notification intensity within this manual, as identified by the signal words **WARNING**, **CAUTION**, **IMPORTANT** and **Note**. Always observe these warnings to ensure safety and prevent potential injury or equipment damage.



CAUTION:

Indicates a potentially hazardous situation which, if ignored, could result in serious injury or even death.



DANGER:

INDICATES AN IMMINENTLY HAZARDOUS SITUATION WHICH, IF NOT AVOIDED, WILL RESULT IN SERIOUS INJURY OR EVEN DEATH.



Note:

Provides additional information which may be helpful during the operation, routine maintenance, and cleaning.



Important:

Alerts against unsafe practices. Observe Important notifications to ensure food safety, prevent possible minor personal injury, or damage to the machine.

Warnings

- Read the operating manual carefully before using the dispenser.
- It is essential to disconnect the dispenser from the power supply before carrying out any repair work.
- Please observe the maintenance advice and intervals.
- Any maintenance, cleaning and repair tasks that the end customer is not specifically authorised to perform may only be carried out by trained service personnel.
- For your own safety, and to ensure that your dispenser enjoys a long service life, you should only use original equipment manufacturer (OEM) spare parts.
- The dispenser may only be used to prepare the products specified in the section on intended use.
- Never submerge the dispenser or the power cable in water.

Introduction

**CAUTION:**

Before the installation and use of the appliance, carefully read the supplied instructions. The manufacturer is not responsible if an incorrect installation and use causes injuries and damages. Always keep the instructions with the appliance for future reference.

- Please read the operating manual carefully before using the dispenser.
- To ensure the safe operation of the dispenser, regional regulations (e.g. accident prevention regulations) must be adhered to in addition to following the instructions in this manual.
- The operating company is responsible for providing the details of these additional regulations.
- This guide contains important instructions for proper and safe use of the appliance.
- Always keep this guide close at hand for future reference.
- This appliance dispenses fresh brewed coffee, coffee-based drinks, and filtered water. To keep the appliance and base cabinet clean and hygienic, and all beverages tasting fresh, follow all steps listed in the OPERATION and CLEANING sections of this manual.
- Access to the service area (appliance and base cabinet interior areas) is restricted to persons having knowledge and practical experience of the appliance; in particular regarding safe handling and operation and performing cleaning tasks and maintaining adequate hygiene. Only persons who have been adequately trained should access the service area, if you require training contact your distributor for applicability or other options.
- To prevent dry ingredient spoilage, all dry ingredients (coffee beans, ground coffee, sugar, ingredient powders, etc.) should be used up and refilled within one month, or disposed of and replaced if older than one month.
- Never immerse the appliance, plug or mains cable in water. There is a danger of electric shock.
- This appliance can be used by children aged from 8 years and above and persons with reduced physical, sensory or mental capabilities or lack of experience and knowledge if they have been given supervision or instruction concerning use of the appliance in a safe way and understand the hazards involved.
- This appliance is not intended for use by persons (including children) with reduced physical, sensory or mental capabilities, or lack of experience and knowledge, unless they have been given supervision or instruction concerning use of the appliance by a person responsible for their safety.
- Children shall not play with the appliance.
- Children should be supervised to ensure that they do not play with the appliance.
- Cleaning and user maintenance shall not be made by children without supervision.
- The appliance is only to be installed in locations where it can be overseen by trained personnel.
- Do not use the appliance if the mains cable, plug is damaged or the appliance has fallen over.
- If the supply cord is damaged, it must be replaced by the manufacturer, its service agent or similarly qualified persons in order to avoid a hazard.
- Only plug the appliance into a properly installed earth-grounded safety socket with line voltage matching the technical data for the appliance.
- In case of emergency, (e.g., the machine catches fire or becomes unusually hot or noisy), disconnect the power immediately and turn off the water supply.

Introduction

- If the machine is likely to be exposed to temperatures below 0°C during handling and transport, make sure that service personnel empties the boiler and water system. (The machine's boiler and water system is empty when delivered from the factory.)
- Do not install or use the appliance outdoors or anywhere it can be exposed to severe weather (rain, snow, frost). It will cause material damage to the appliance.
- Prevent the appliance from freezing. If the water in the hydraulic system does freeze, do not use the appliance. Unplug it and contact a technician to inspect it and perform necessary repairs.
- The A-weighted sound pressure level is below 70 dB.
- Keep ventilation openings, in the appliance enclosure or in the built-in
- Operation, filling and cleaning of the Appliance is restricted to authorized and trained persons. Take care that new staff reads the operator manual carefully before operating the Appliance, and understands the safety and hygiene aspects involved. For quick reference a cleaning instruction sticker is included inside the Appliance's door.
- You may only use the appliance according to the instructions in this operator manual for the delivery of drinks. The manufacturer is not liable for any damage or injury resulting from improper use of the appliance or from non-compliance with the procedures described in this operator manual.
- The appliance can be used by children aged 8 years and above and persons with reduced physical, sensory or mental capabilities, or lack of experience and knowledge, if they have been given supervision or instruction concerning use of the appliance in a safe way and understand the hazards involved.
- Children should be supervised to ensure they do not play with the appliance.
- Do not let children play with the packaging included with the appliance.
- Cleaning and user maintenance shall not be made by children.
- Installation, relocation (water and electrical mains connections), service and programming of the appliance is restricted to authorized service technicians. The service area is restricted to persons having knowledge and practical experience of the appliance; in particular as far as safety and hygiene are concerned.
- This appliance is not suitable for installation where a pressure washer may be used.
- This appliance must not be cleaned by a pressure washer, sprayer or steam cleaner.
- Clean the appliance with a moist soft cloth and mild detergents as needed. Do not use abrasive products, abrasive cleaning pads, solvents or metal objects - these can damage the finishes.
- This appliance is not suitable for outdoor use.
- The appliance is intended to be used in household and similar applications such as:
 - Farm houses; staff kitchen areas in shops, offices and other working environments.
 - By clients in hotels, motels, bed and breakfast and other residential type environments.
- Use the appliance for storage and dispensing of milk only.
- Do not store explosive substances such as aerosol cans with a flammable propellant in the Appliance.
- Protect the appliance against running water, splashes, spray or steam, heat and heavy dust.
- The liquids delivered by the appliance and/or the paired coffee dispenser are hot!

Introduction

- Avoid scalding! Keep hands and other body parts away from the paired coffee dispenser while drinks are being dispensed and during the rinsing program.
- Do not place cups, pots, or containers filled with hot liquids on top of the appliance.
- There is a risk of being scalded if the cups/pots/containers fall over; take care when handling them.
- Keep sufficient space around the appliance to get away easily in case of hot liquid splashes.
- When positioning the appliance, ensure the supply cord is not trapped or damaged.
- Never touch the power supply or power supply plug when your hands and/or the power cord or plug are wet.
- If the power cord of the appliance is damaged, unplug the power cord from the electrical mains and contact your system supplier for replacement.
- If the supply cord is damaged, it must be replaced by the manufacturer, its service agent or similarly qualified person in order to avoid a hazard.
- The appliance is designed for indoor installation on a stable flat surface such as a table or a counter. Shield the appliance from direct sunlight, frost and rain.
- Make sure that there is sufficient space around the appliance for ventilation, and the front/back/ sides are accessible for service.
- Keep ventilation openings, in the appliance enclosure or in the built-in structure, clear of obstruction.
- In case of frost build-up inside the refrigerator box or cooling unit do not use mechanical devices or other means to accelerate the defrosting process, other than those recommended by the refrigerator's manufacturer.
- Do not use electrical appliances inside the food storage compartments of the appliance, unless they are of the type recommended by the manufacturer.
- Do not let hot items touch the plastic parts of the appliance.
- Only use water hoses and connections in compliance with local regulations.
- Connect the appliance to the drinking water line in compliance with local regulations.
- When connected to a wall outlet power supply, use a grounded safety plug socket in compliance with local regulations. Ensure that the electric circuit is protected by means of a ground fault current safety switch and that the power supply plug remains accessible after installation.
- Risk of fire and electric shock.
- Replace only with manufacturer's original cord set.
- Disconnect from power supply before servicing.

Precautions

- Do not try to open the appliance or repair it in any way.
- Only have the appliance repaired in a technical workshop, service centre or by a qualified person.
- Remove the mains cable from the socket when the appliance is not in use for longer periods.
- To do this, pull the plug not the cable.
- This appliance must be placed in a horizontal surface resistant to any water that may leak.
- Place the appliance out of the reach of children.
- Position the mains cable so that people cannot trip over it.
- Keep it away from sharp edges and heat sources.
- The new hose-sets supplied with this appliance are to be used, old hose-sets must not be re-used.
- This appliance is not suitable for installation in an area where a water jet could be used.
- This appliance must not be cleaned by a water jet.
- Do not store explosive substances such as aerosol cans with a flammable propellant in the appliance or refrigerator.

Intended use

This appliance is intended to be used indoors only, for applications such as:

- Staff kitchen areas in shops.
- Offices and other commercial working environments, break rooms.
- On agricultural estates.
- By clients in hotels, motels and other residential type environments.
- Bed and breakfast type environments.

User groups

User: Customer/consumer/front line operator (FLO). Uses the dispenser to consume drinks in accordance with the conditions defined by the operating company. Does not have access to internal parts of the dispenser or its programming without adequate training as provided by the manufacturer, operating company or distributor.

Service personnel: Personnel trained by the manufacturer, operating company or distributor who know how to fill and clean the dispenser.

Service technician: Expert trained by the manufacturer, operating company or distributor who is aware of the hazards posed by the dispenser and is familiar with the dispenser's technical equipment. Service technicians are trained and capable of installing, maintaining and repairing the dispenser.

Operating company: Responsible for setting up and operating the dispenser correctly.



CAUTION:

No one is permitted to carry out service, maintenance or repair work on the dispenser unless they have been properly trained and instructed by the operating company or the manufacturer.

Possible types of misuse

- Danger caused by incorrect installation.
- Relying on personnel to care for the appliance that have not been properly instructed and are not fully qualified.
- Using products or ingredients that are out of date or are close to their best-before date.
- Using products that have not been approved by the manufacturer.
- Using spare parts that have not been approved by the manufacturer.
- Technical changes and modifications to the dispenser that have not been authorised by the manufacturer.
- Operating the dispenser outside of the specifications defined in this manual.

Installation notes**CAUTION:**

Appliance may only be installed by qualified personnel who has been trained by the manufacturer or their distributor.

- Remove all the packaging and dispose of it in the appropriate recycling bin.
- Do not install or use a damaged appliance.
- Do not install the appliance close to radiators or cookers, ovens or hobs/ranges.
- Do not install the appliance where it is exposed to direct sunlight.
- Make sure the power cable is not pinched or trapped when installing the appliance

Electrical connection notes**CAUTION:**

Risk of fire and electrical shock!

- The appliance must only be connected to an earth grounded power outlet.
- All electrical connections should be made by a qualified personnel.
- Make sure that the electrical information on the rating plate agrees with the mains power supply for the installation location.
- Always use a correctly installed shockproof socket.
- Do not use multi-plug adapters or extension cables to provide power to the appliance.
- Before maintenance, turn off the appliance and disconnect the mains power plug from the mains socket.

Warm connection requirements

- When connecting the appliance and/or refrigerator unit to the mains power supply make sure that the power rating shown in the “FACTS & WEIGHT” section matches the supply voltage for the installation location.
- When installing the appliance unobstructed-dimensions are:
 - Behind: 10cm minimum (for hose and power connection and ventilation)
 - Above: 20cm minimum (for access and ingredient refilling)
 - In front: 45cm minimum (for door opening and interior access)
- For the optimal performance of the appliance these hydraulic (domestic water connection) parameters shall not be exceeded:
 - Maximum inlet water pressure : 500KPa (5Bar)
 - Minimum inlet water pressure: 200KPa (2Bar)
 - Maximum ambient working temperature: 40°C
 - Minimum ambient working temperature: 10°C
- The dispenser is designed exclusively for use with drinking water that has a hardness of 6-8°dH. If the hardness is higher, a suitable filter must be used.
- New hose-sets supplied with the appliance are to be used. Old hose-sets should not be reused.
- The dispenser is to be installed with adequate backflow protection to comply with applicable Federal, state, and local codes.

Refrigeration system information

- Do not use mechanical devices or other means to accelerate the defrosting process, other than those recommended by the manufacturer.
- Do not damage the refrigerant circuit.
- Do not use electrical appliances inside the food storage compartments of the appliance, unless they are of the type recommended by the manufacturer.
- Do not store explosive substances such as aerosol cans with a flammable propellant in this appliance.
- The appliance contains hydrocarbons in the cooling unit. Only qualified personnel may perform maintenance or recharging of the refrigerant circuit.
- Do not damage the refrigerant circuit.
- Do not put flammable products or items that are wet with flammable products inside the appliance. Do not store flammable gas and liquid in the appliance.
- Do not touch the compressor or the condenser, THEY GET HOT!
- If damage occurs to the refrigerant circuit, make sure there are no flames or other sources of ignition in the room. Ventilate the room to prevent fire.

**CAUTION:**

Risk of Fire or Explosion due to Flammable Refrigerant Used. Follow Handling Instructions Carefully in Compliance with U.S. Government Regulations.

**DANGER:**

Be careful not to cause damage to the refrigerant circuit. It contains isobutane (r600a), a natural gas with a high level of environmental compatibility. This gas is flammable.

Safe milk handling reminders**CAUTION:****Risk of machine damage! Improper handling of the appliance can result in damage!**

Under no circumstance may the appliance be used to heat or dispense any liquid other than the intended milk products (UHT / Pasteurized milk / Almond milk / Wheat milk / Soy milk).

Improper handling of milk can cause health problems.

Always adhere to the following points:

- Never use unpasteurized or raw milk.
- Follow daily cleaning procedures precisely as described in this manual.
- Only use pre-chilled milk stored at a temperature between 2–5°C.
- Only add milk directly from the original packaging into the milk container.
- Clean the milk container and appliance daily according to the cleaning program in the user manual.
- Always reclose the milk container lid and cooling unit (internal/external) immediately after filling.
- Store milk in accord with the manufacturer's specifications.
- Store milk separately away from cleaning products.
- Always use the oldest products first ("first in, first out" principle).
- Use milk before the expiry date. If the expiry date has passed, the milk cannot be consumed and must be disposed of.
- Always reseal packages after opening to ensure that the contents remain fresh and are protected from contamination.
- When the appliance is to be switched off, first clean it with a tablet according to the cleaning program in the user manual. Then clean the milk container and leave it empty.

Disassembly and disposal

- Dispose of the dispenser in accordance with appliance regional disposal regulations.
- This appliance is subject to the Waste Electrical and Electronic Equipment Directive (WEEE/EU directive) and must not be disposed of together with normal domestic waste.
- The packaging is made from various recyclable materials. After installing the appliance, please contact the waste disposal department of your local authority to check what options are available for recycling the packaging material or disposing of it in an environmentally friendly way.

Disposal and scrapping

If the appliance ever needs to be scrapped and disposed of, be sure to:

- Disconnect the appliance from the mains power supply.
- Disconnect the mains cable and dispose of it in the appropriate recycling bin.
- The insulation material is ozone friendly, but contact your local municipal authority for information on how to discard the appliance in accord with local laws.
- Do not release the compressed refrigerant into the atmosphere without authorization, reclamation by an authorized person may be required. If refrigerator gas reclamation is required, this must be done by a licensed, qualified individual.



Compliance code calculator

The UNITY and UNITY+ coffee dispensing platform is designed to be modular and highly flexible so as to adapt to a nearly unlimited array of serving environments. Additionally, the platform is easily customizable due to easy part and system interchangeability. As a result, the number of possible combinations is vast. Form regulatory certification purposes, each unique configuration can be identified and labelled using a standardized 12-digit compliance code. To make understanding the assigned compliance code for each unique version easier the compliance code calculator tool, and an explanatory chart, are provided below:



POSITION #:	CODE I.D.:	EXPLANATION:
1	A	preassigned, not changeable
2	I	preassigned, not changeable
3	I	preassigned, not changeable
4	F	preassigned, not changeable
5	G	boiler heating element 2500W
	F	boiler heating element 2100W
6	3	indicates version with 10" touchscreen
	8	indicates version with 7" touchscreen
7	1	indicates version with Grinder + Mono brewer
	2	indicates version with Grinder + Mono brewer and Instant
	3	indicates version with Grinder + Espresso brewer and Instant
	4	indicates version with Mono Brewer
	6	indicates version with Mono Brewer and Instant (1 Brewer)
	7	indicates version with Grinder + Espresso brewer, Mono Brewer and Instant
	8	indicates version with Grinder + Mono Brewer, Mono Brewer and Instant
	9	indicates version with Grinder + Espresso brewer, Grinder + Mono Brewer and Instant
	A	indicates version with Mono Brewer and Instant (2 Brewer)
	B	indicates version with Grinder + Espresso brewer
Continued on next page.C		indicates version with Grinder + Mono Brewer and Grinder + Espresso

Compliance code calculator

...continued from previous page.

Sample code: Pos. 1 - 4:
A I I F - Pos. 5:
G Pos. 6:
Pos. 7:
Pos. 8:
- Pos. 9:
Pos. 10:
Pos. 11:
A Pos. 12:
#

POSITION #:	CODE I.D.:	EXPLANATION:
8	A	indicates Standard version
	B	indicates CVS door cover version
	I	indicates FMU module version
	J	indicates 3G module version
	K	indicates FMU module + CVS door cover version
	L	indicates FMU module + 3G module version
	M	indicates CVS door cover + 3G module version
	N	indicates FMU module + CVS door cover + 3G module version
9	1	indicates no grinder
	2	indicates one grinder
	3	indicates two grinders
10	1	indicates no canister version
	2	indicates one canister version
	3	indicates two canister version
11	A	preassigned, not changeable
12	M	indicates non-water tank version
	N	indicates water tank version

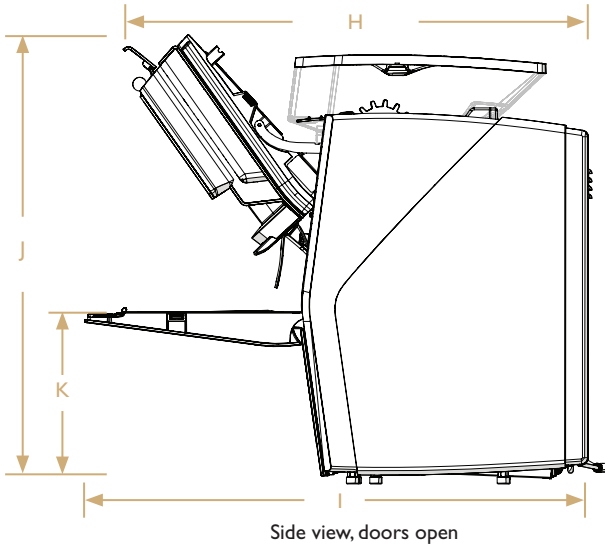
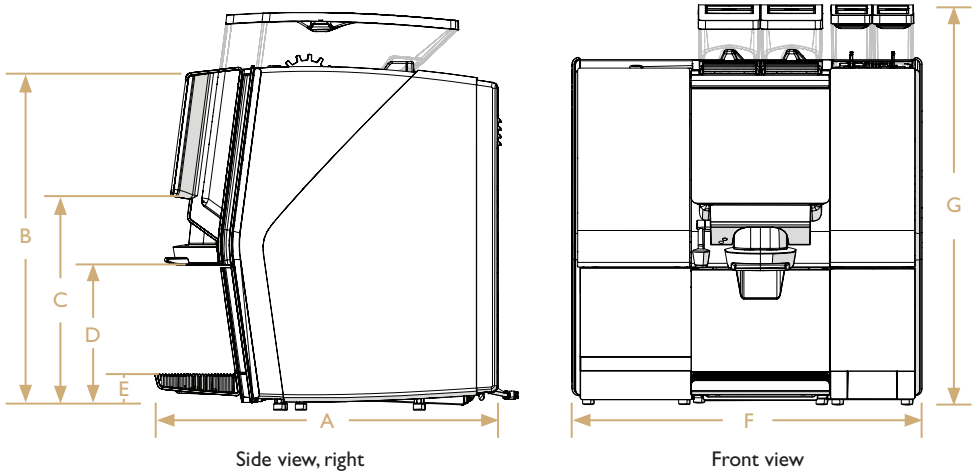
Dispenser specifications

SPECIFICATIONS	ES14/18_BTБ_FMU_IN	ES14/18_BTБ_IN
Built-in grinder	2	
Compliance code	AIF-G39I-33AM	AIF-G39A-33AM
Drink options	10 standard (220 possible)	
Ingredient canister	2	
Fresh milk unit	Yes	No
Bean hopper	2	
Waste bin volume	2kg used coffee waste (dry weight)	
Drip tray volume	1L	
Electronic temperature control	Yes	
Adjustable spout	Yes	
Adjustable cup height	Yes	
Energy saving mode	Yes	
Height, Width, Depth	660, 605, 580mm	660, 410, 580mm
Boiler volume	0.7L	
Water hardness requirement	20-32 ppm calcium	
Water tank	Optional	
Power supply	AIF - G#### - ##A#: 200-240V~; 50-60Hz; 2000-2800W AIF - F#### - ##A#: 200-240V~; 50-60Hz; 1600-2350W	
Water connection	Speed fitting 8mm with Teflon tube	
Weight	75KG	60KG

COMPONENT OVERVIEW

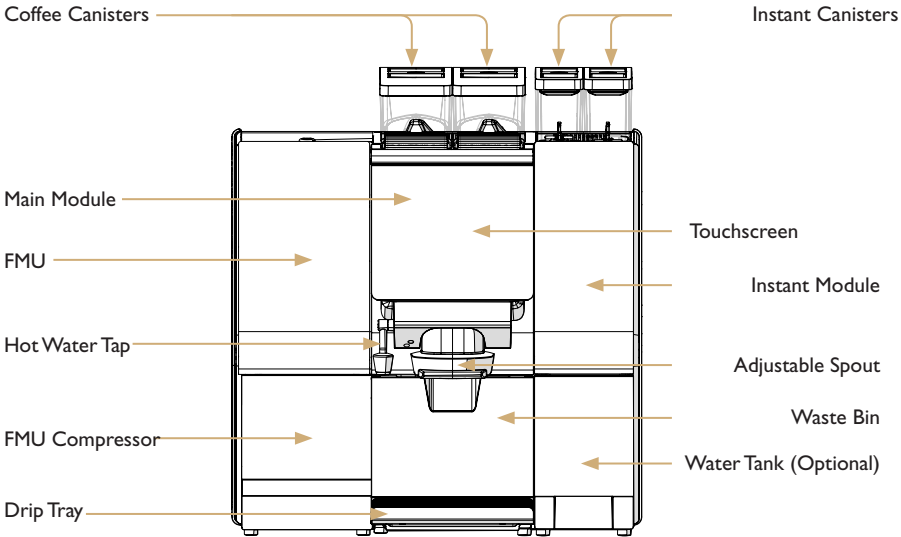
ESI4/I8_BTBT_FMU_IN

Dimensions

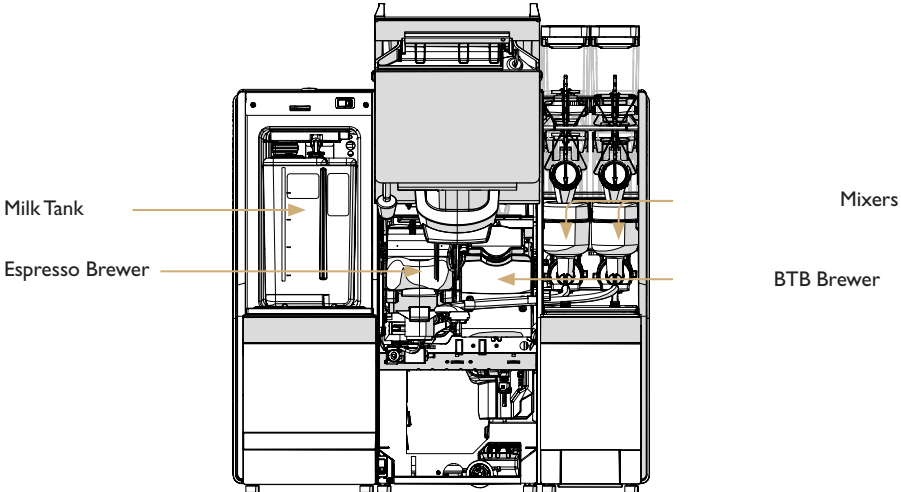


Position	A	B	C	D	E	F	G	H	I	J	K
Dimension(mm)	580	575	355	240	60	605	660	750	780	680	270

Front View



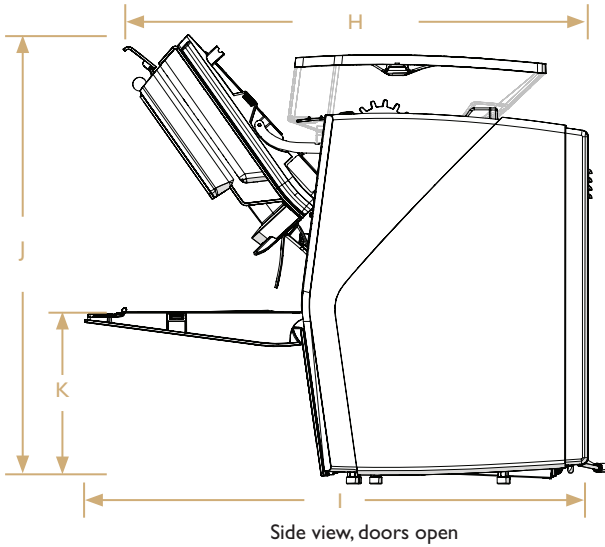
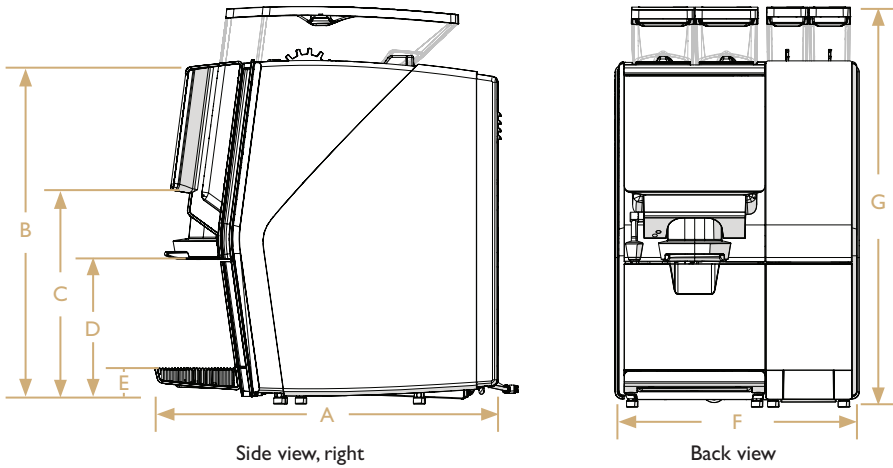
Front View, doors open



COMPONENT OVERVIEW

ESI4/I8_BTБ_IN

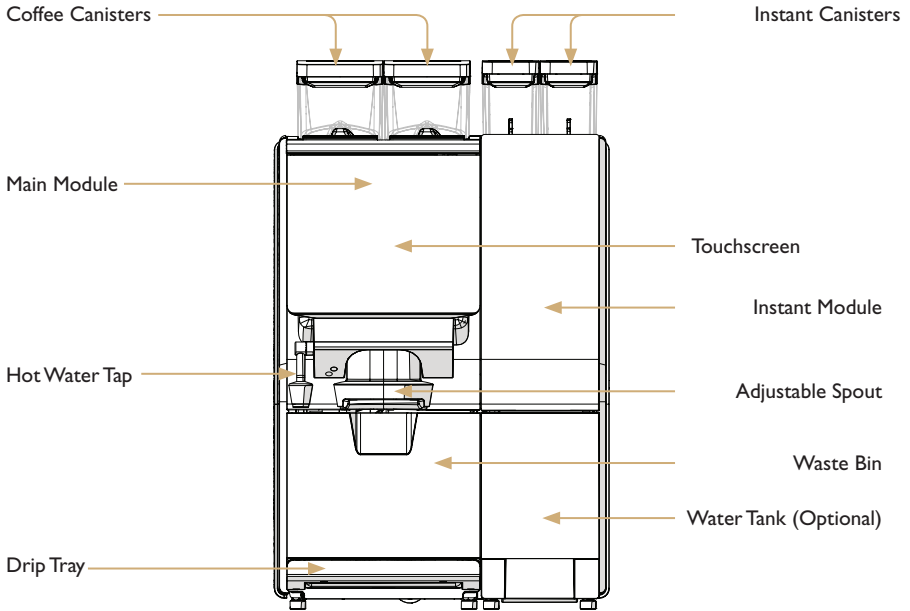
Dimensions



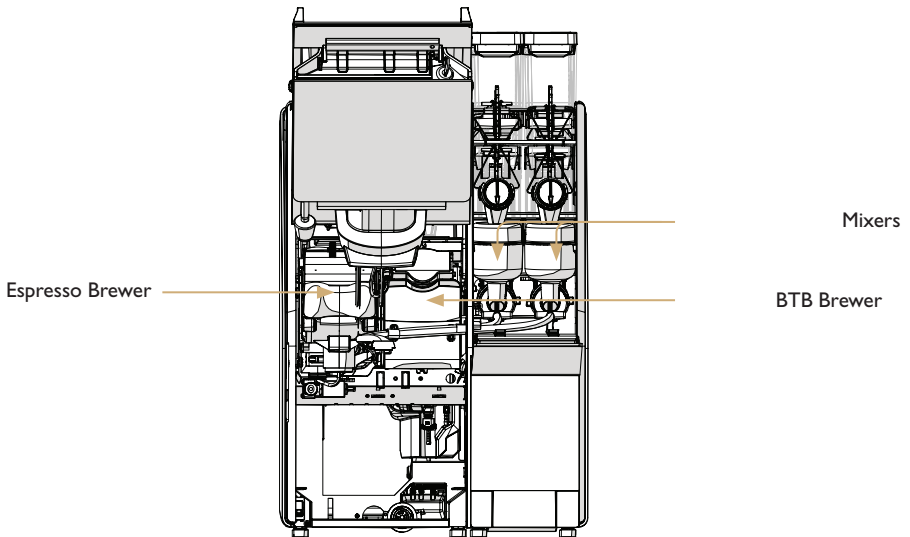
Position	A	B	C	D	E	F	G	H	I	J	K
Dimension(mm)	580	575	355	240	60	410	660	750	780	680	270

COMPONENT OVERVIEW

Front View



Front View, doors open



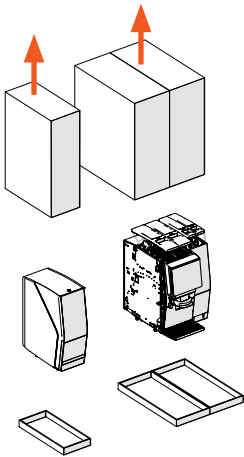


Important:

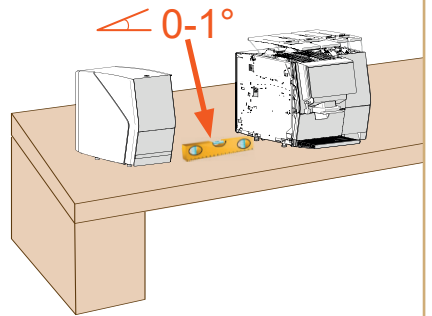
The appliance is intended to be installed by a trained technician only. If you are unsure about any of the installation steps listed below, do not attempt installation. Contact your distributor for a technician to perform the installation for you. Incorrect installation may cause damage to the appliance and will result in voiding of warranty.

Initial set up and installation

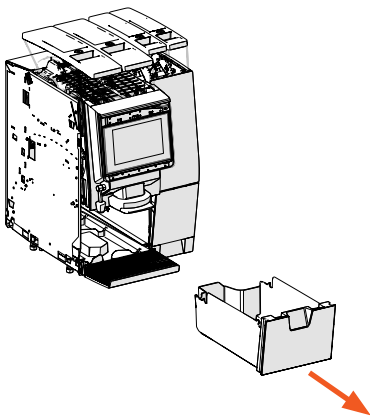
01



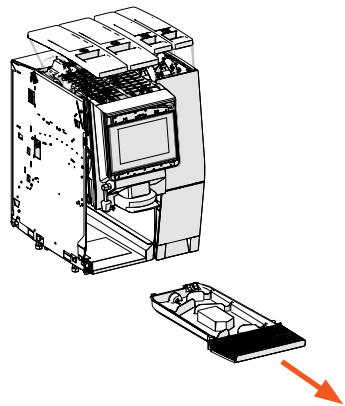
02



03

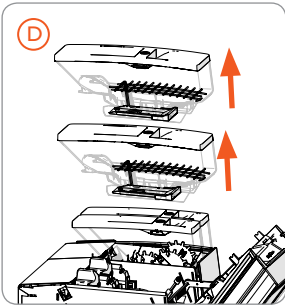
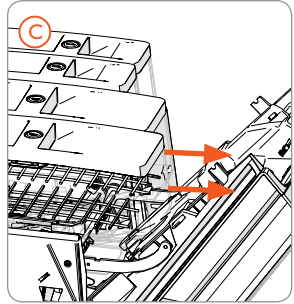
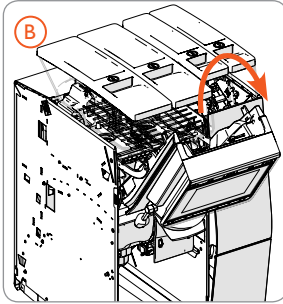
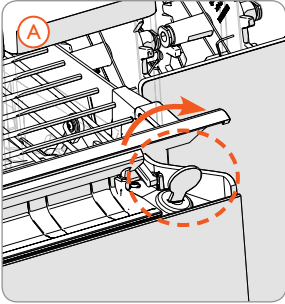


04

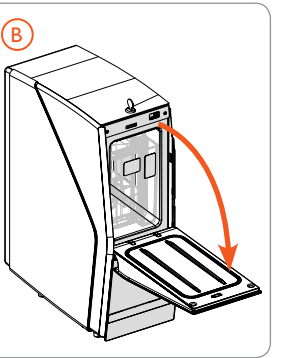
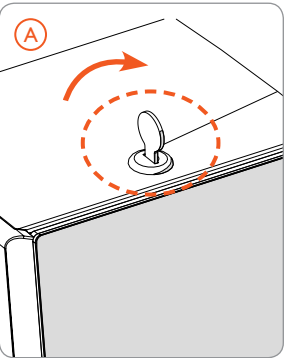


Initial set up and installation

05

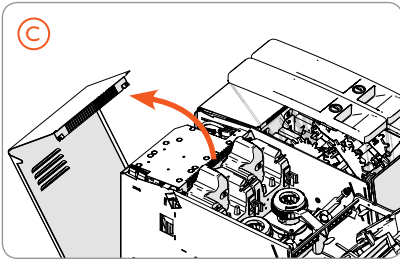
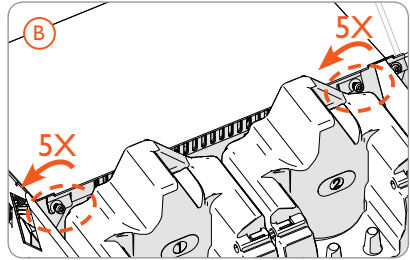
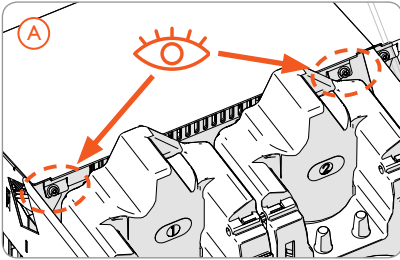


06

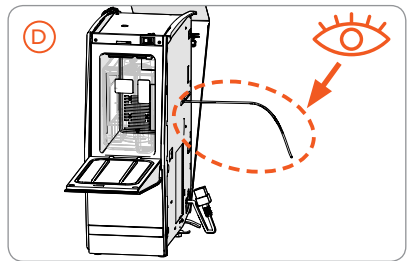
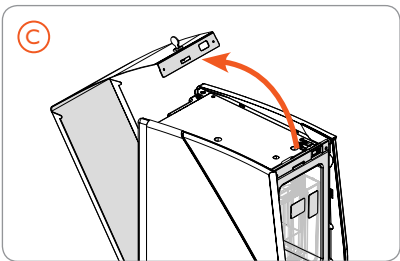
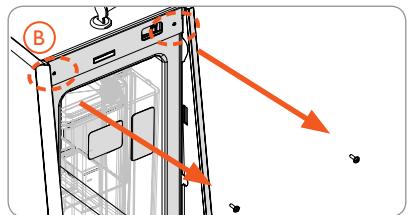
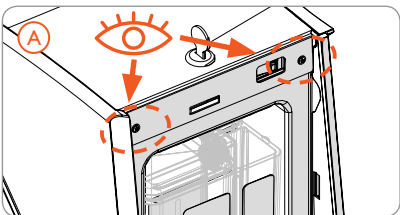


Initial set up and installation

07

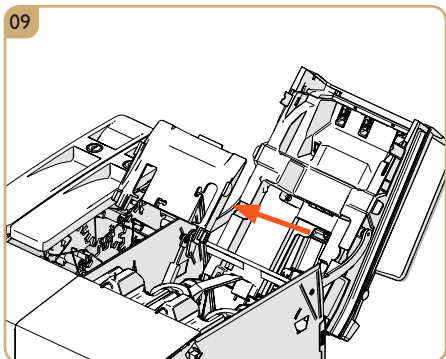


08

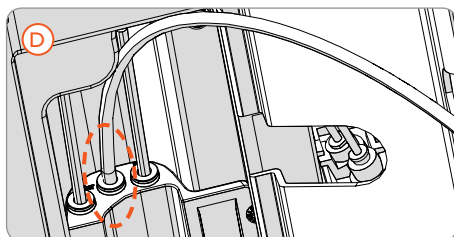
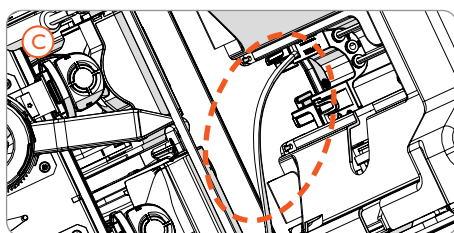
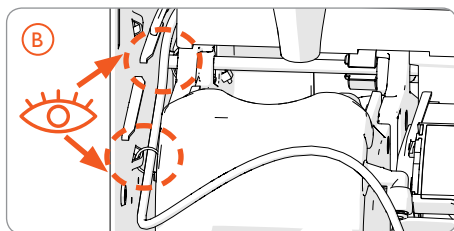
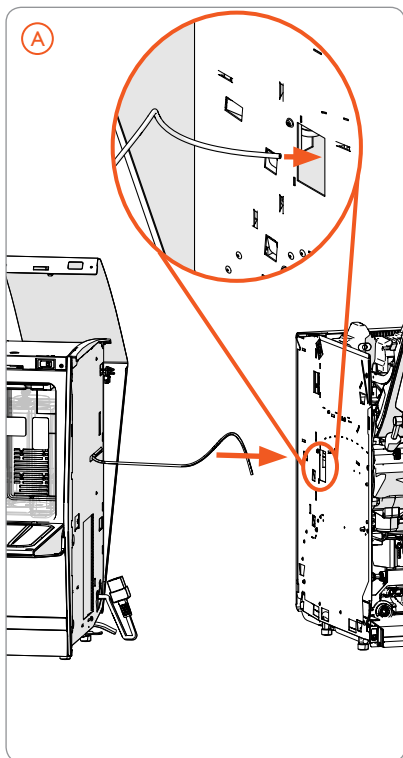


Initial set up and installation

09

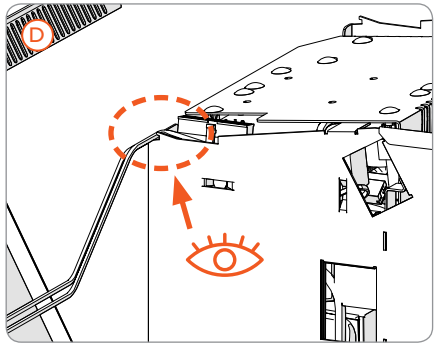
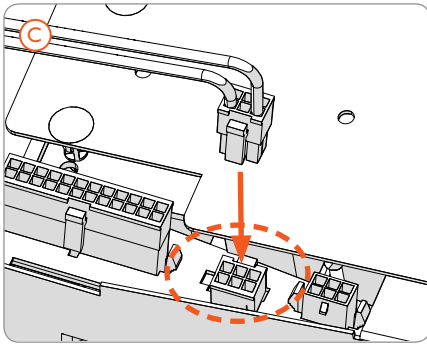
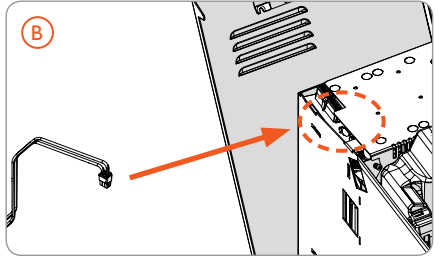
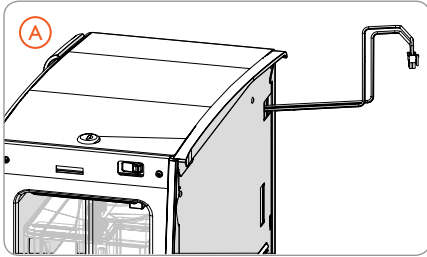


10

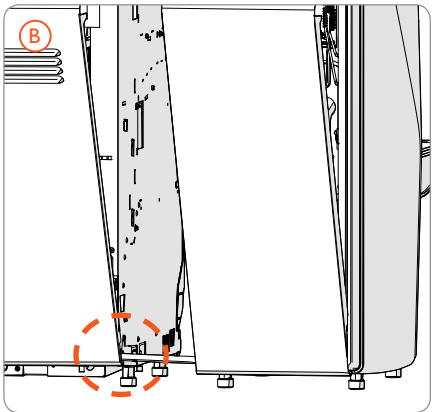
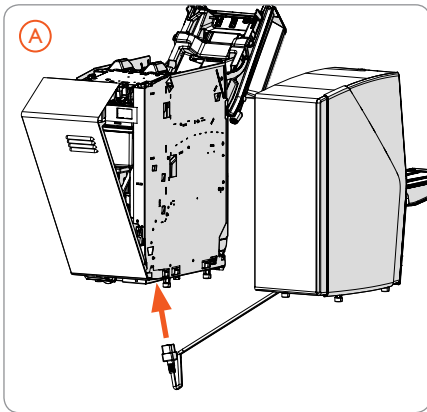


Initial set up and installation

11

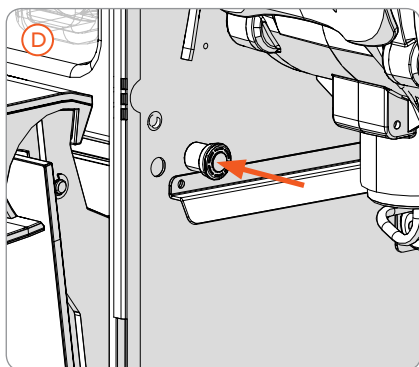
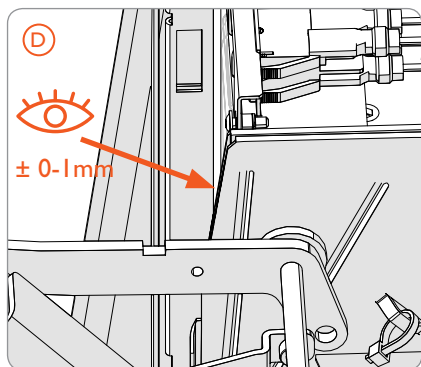
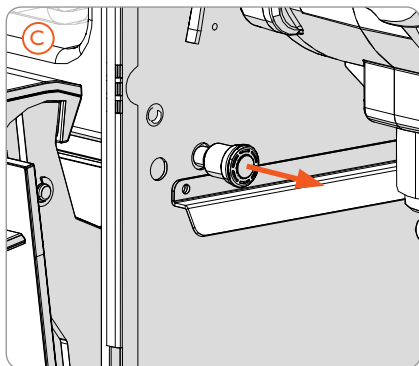
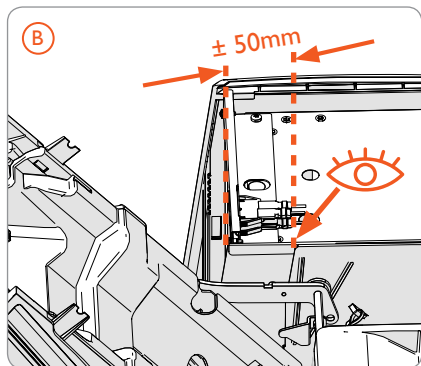
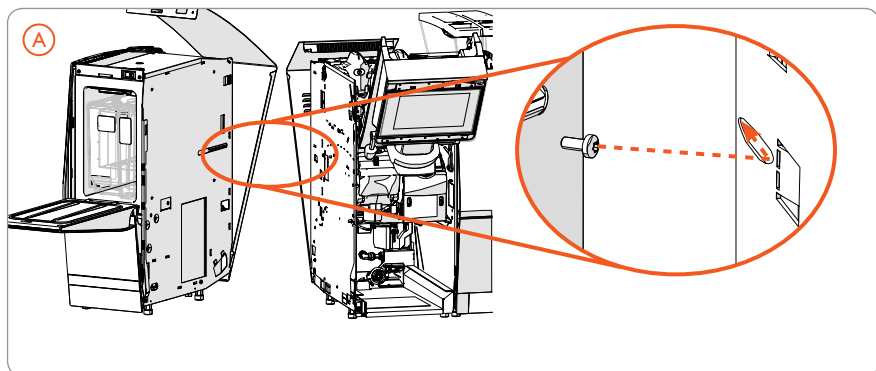


12



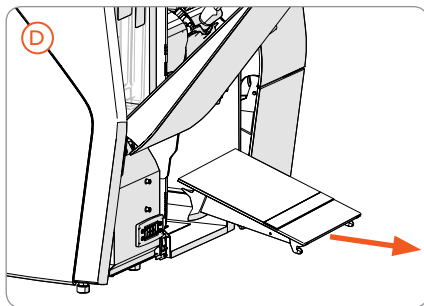
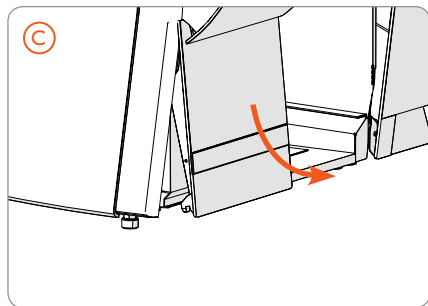
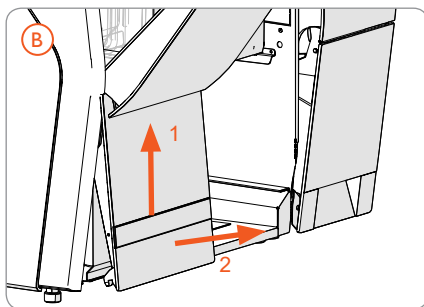
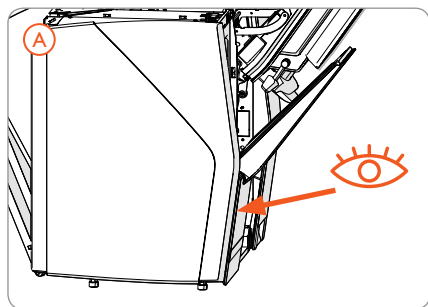
Initial set up and installation

13

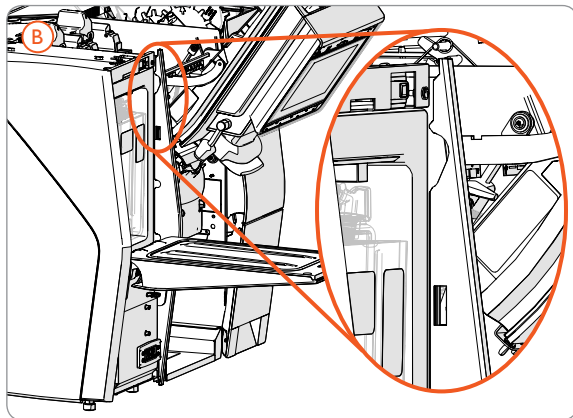
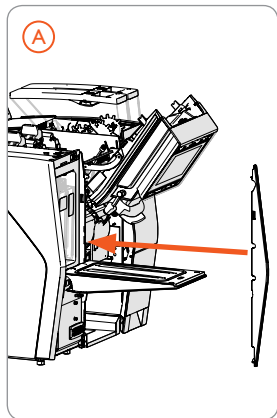


Initial set up and installation

14

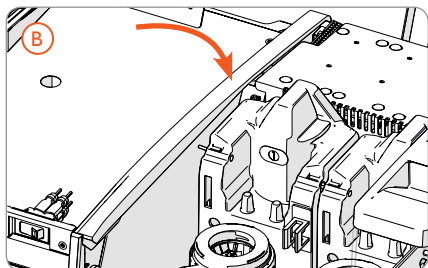
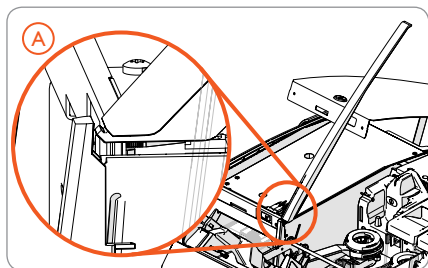


15

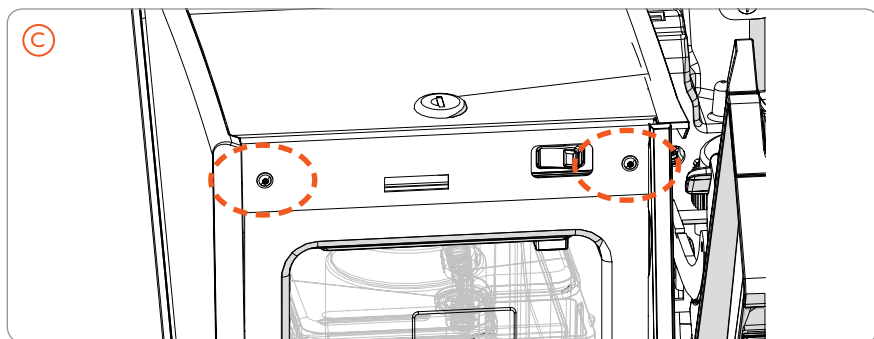
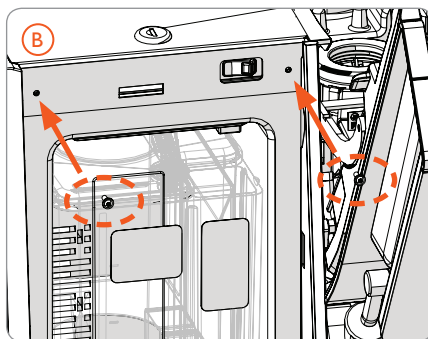
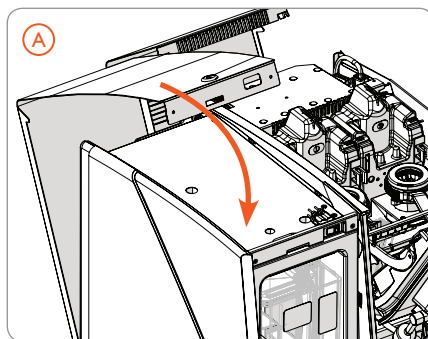


Initial set up and installation

16

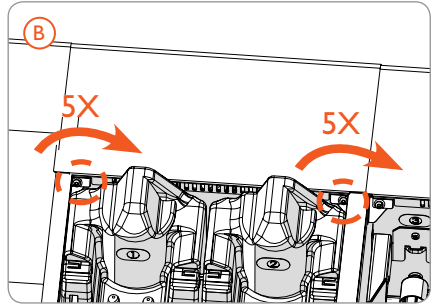
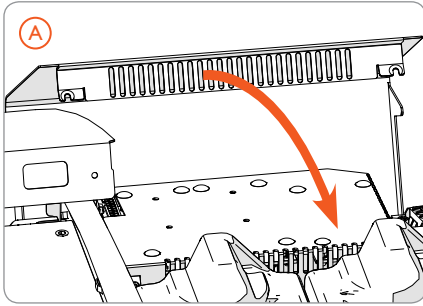


17

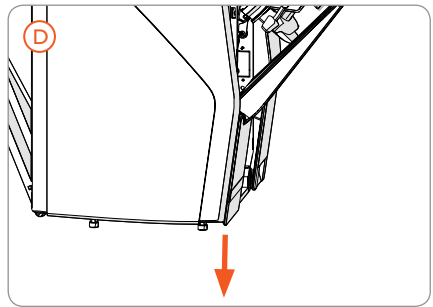
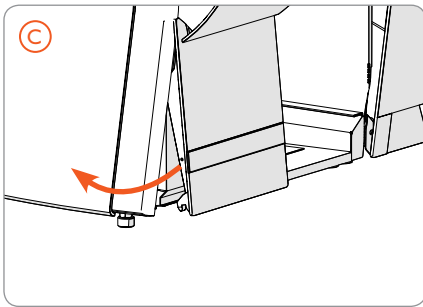
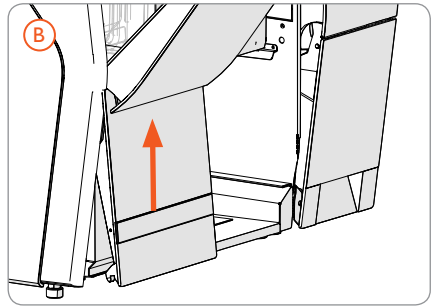
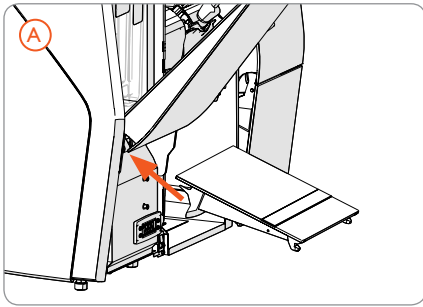


Initial set up and installation

18

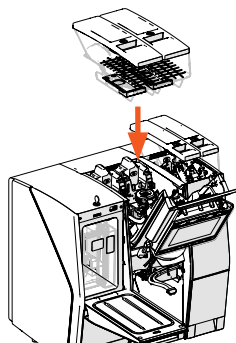


19

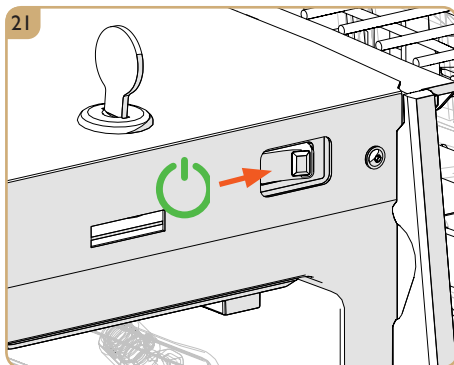


Initial set up and installation

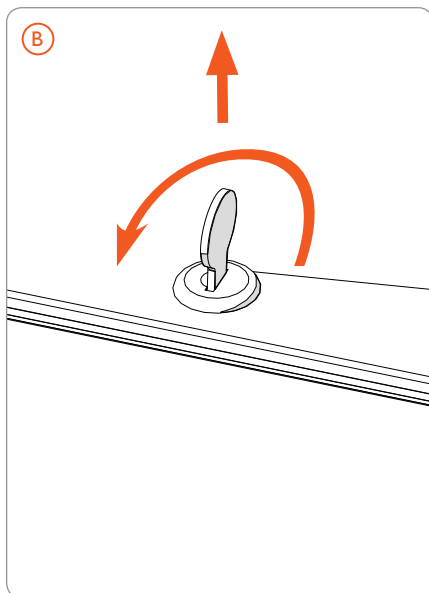
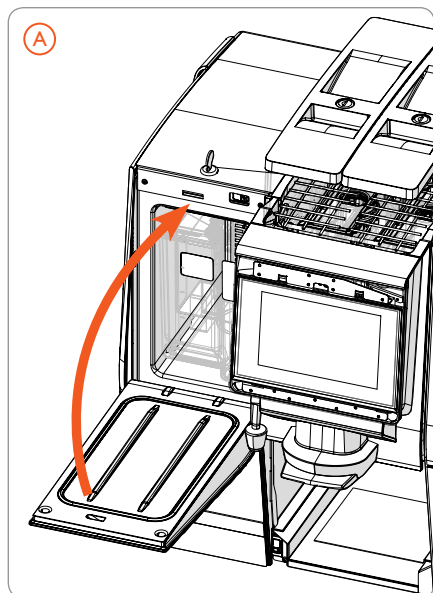
20



21

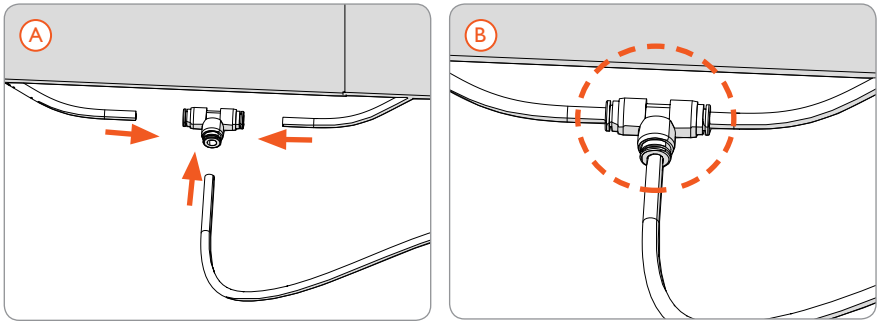


22

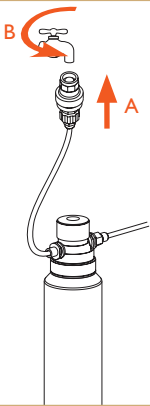


Initial set up and installation

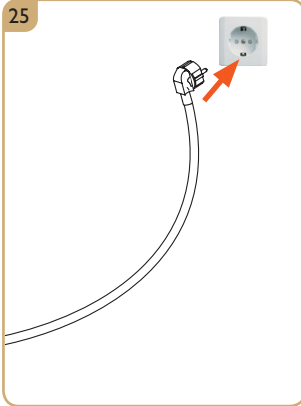
23



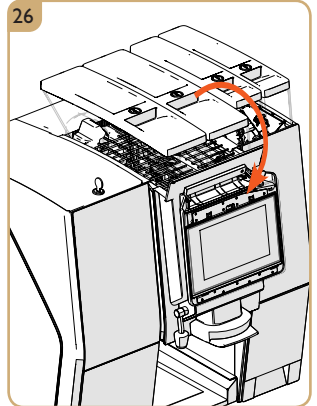
24



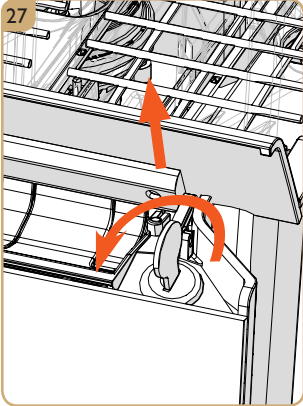
25



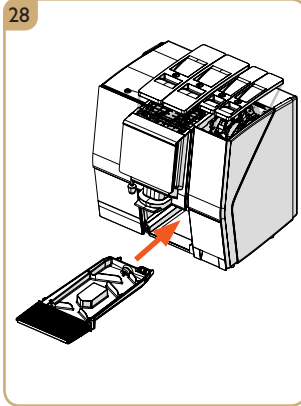
26



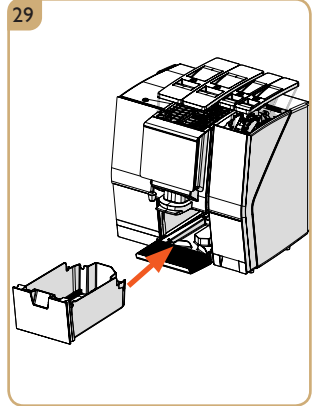
27



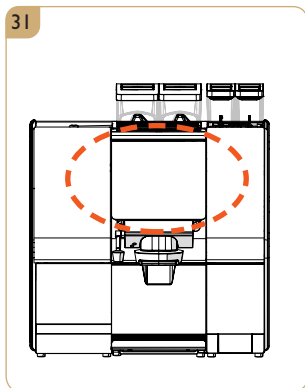
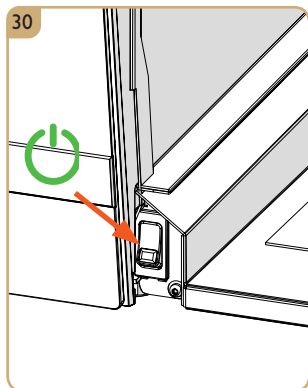
28



29

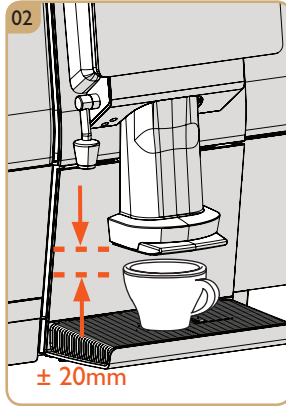
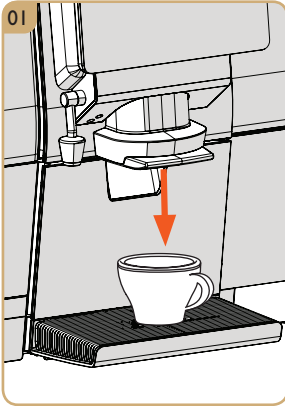


Initial set up and installation

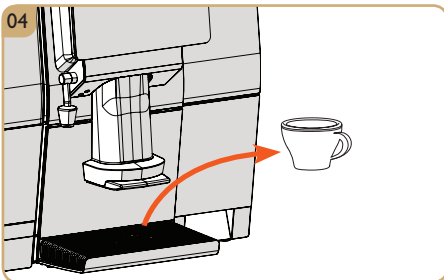
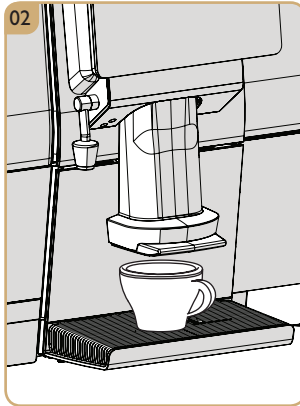


- ▲ Follow on-screen set-up instructions.

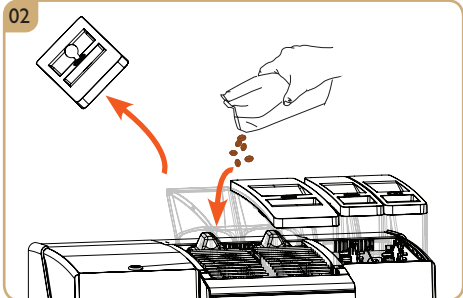
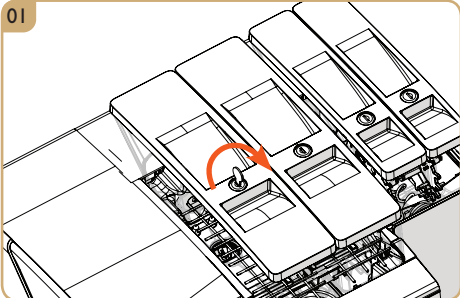
Adjust slider



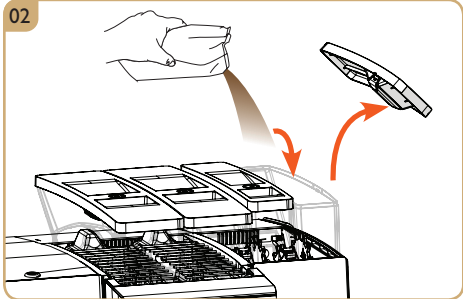
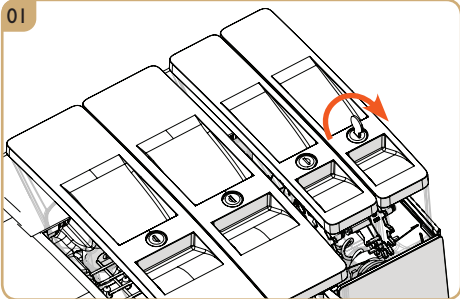
Make a drink



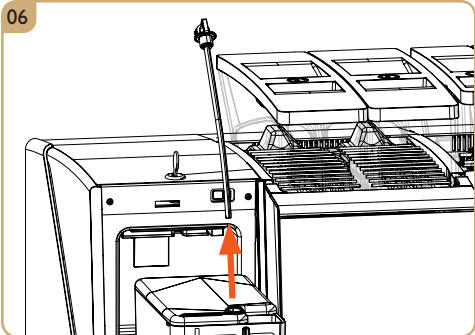
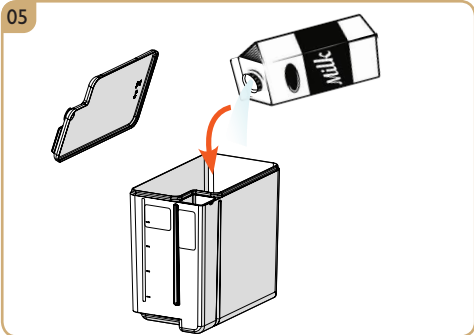
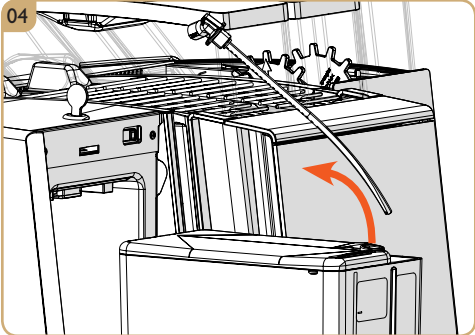
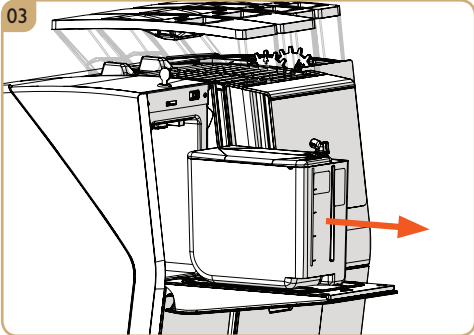
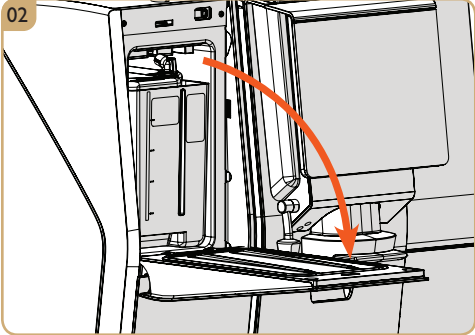
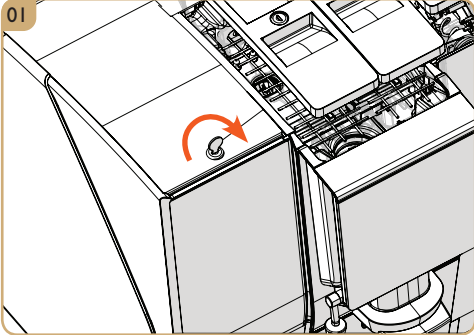
Fill coffee



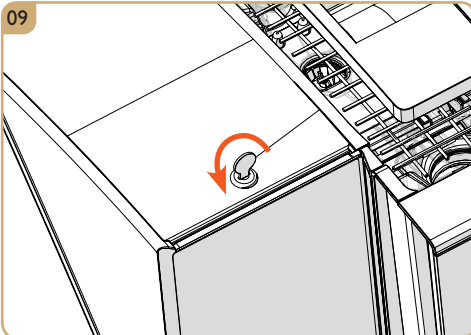
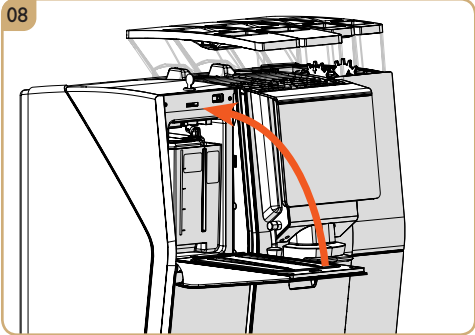
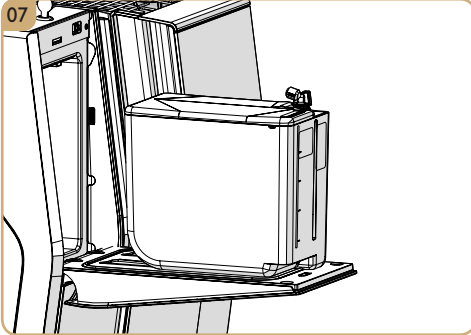
Fill ingredients



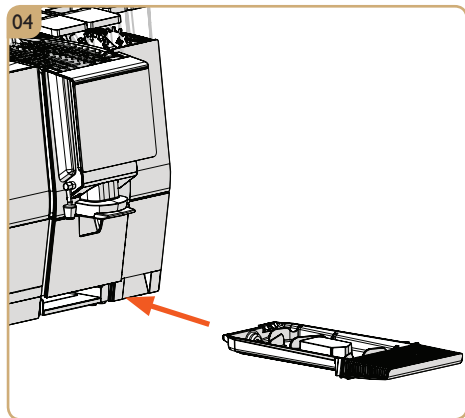
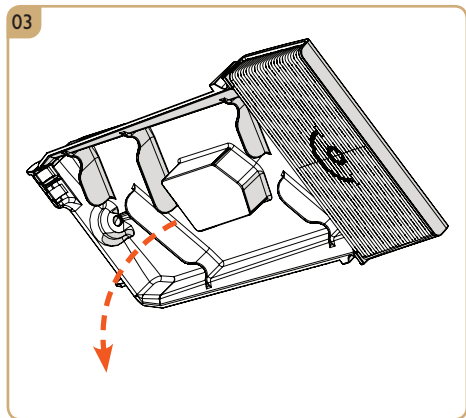
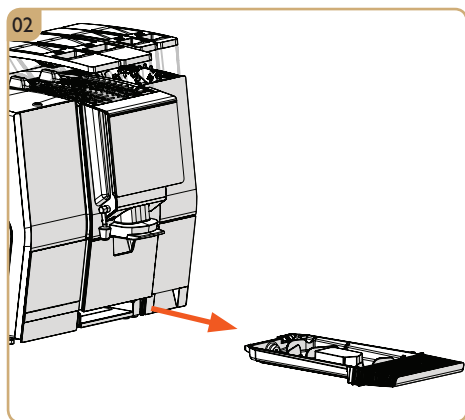
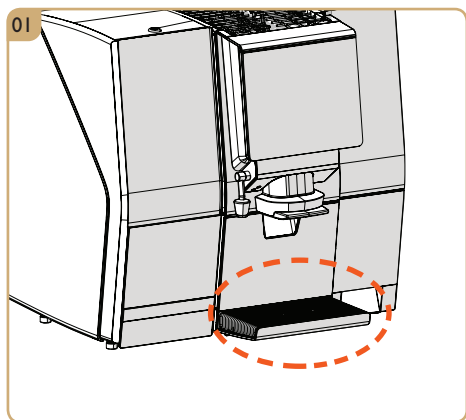
Fill FMU



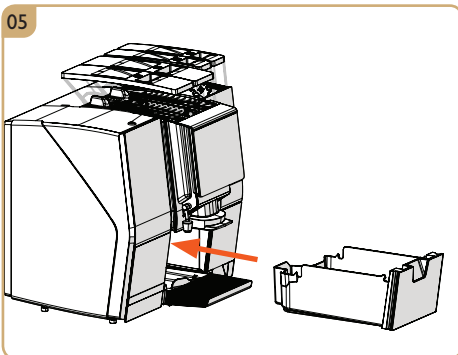
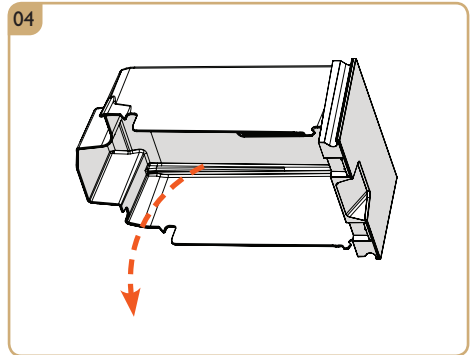
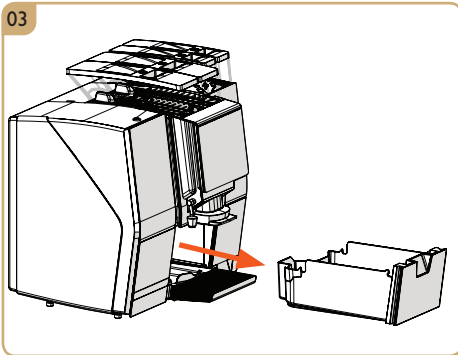
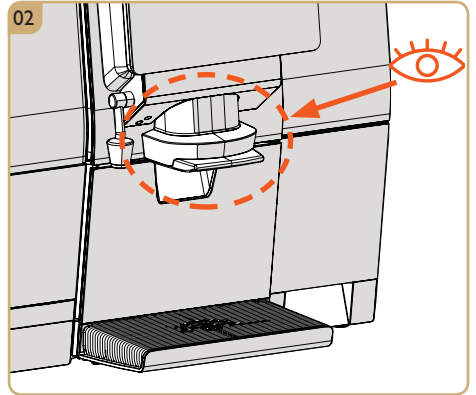
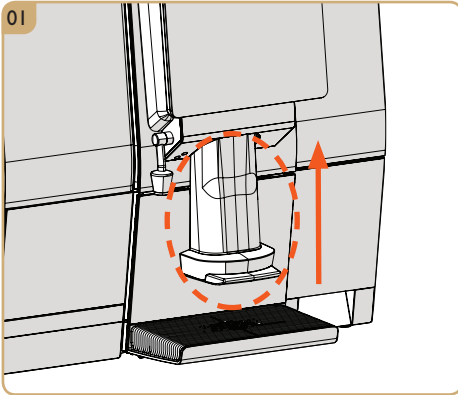
Fill FMU



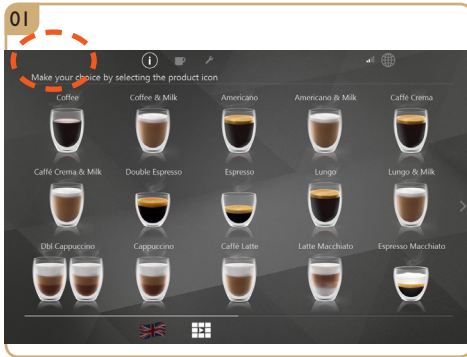
Empty drip tray



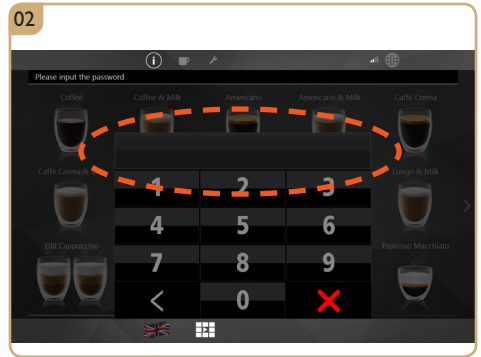
Empty waste bin



Run rinsing cycle



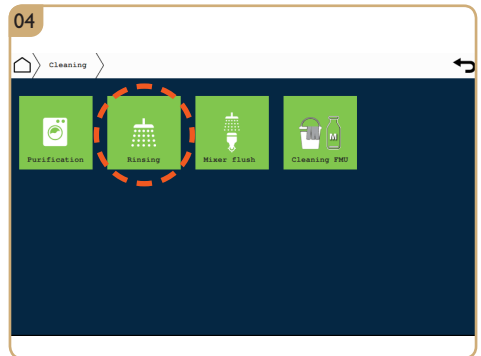
▲ Press the top right corner to access Service Menu.



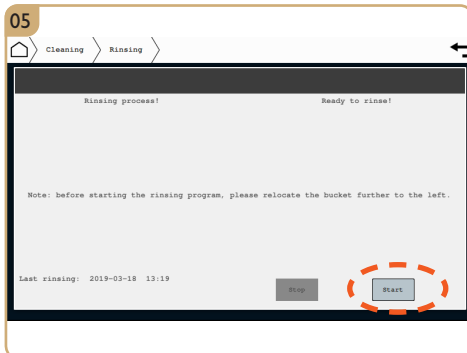
▲ Input the Service Menu password. (Password is available from the distributor.)



▲ Press the Cleaning icon to access the cleaning options.



▲ Press the Rinsing icon.

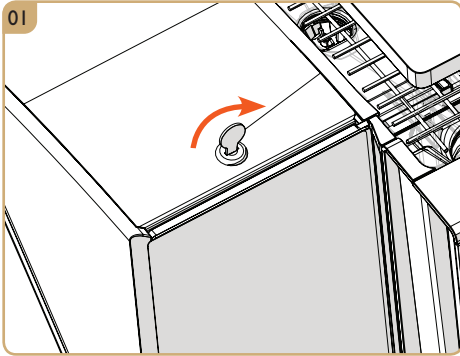


▲ Press Start, follow on screen instructions.

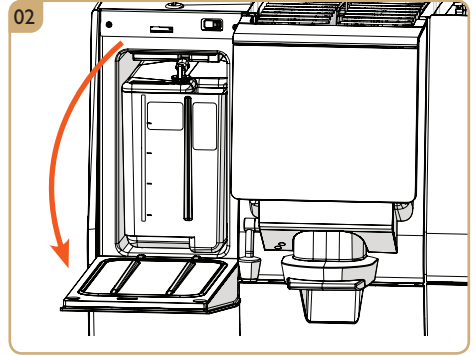


CAUTION:
Cleaning water is very hot!

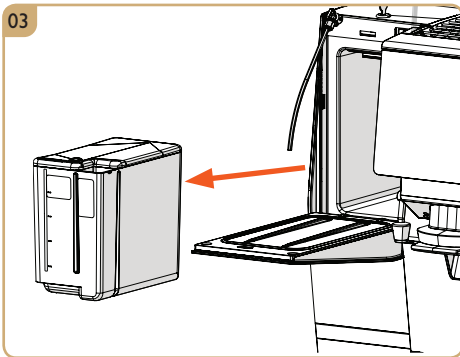
FMU cleaning



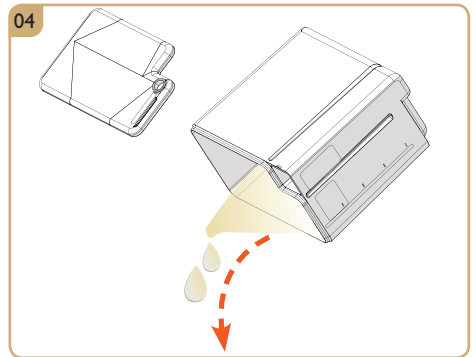
▲ Unlock the door.



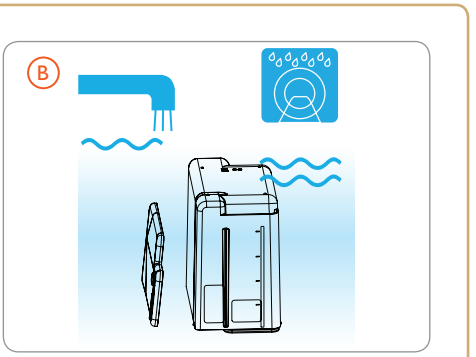
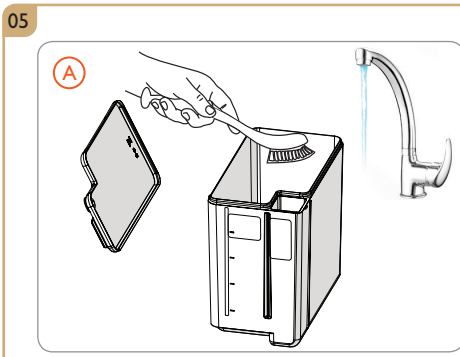
▲ Open the door.



▲ Remove the milk container.



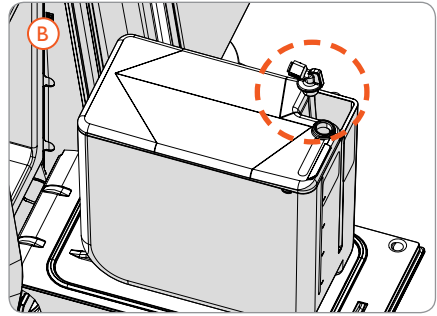
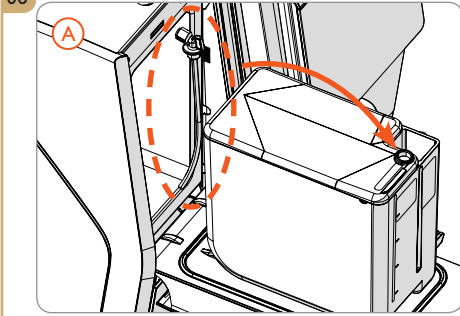
▲ Dispose of any remaining milk.



▲ Wash the milk container either by hand (A), or in a dishwasher (B) that does not exceed 69°C.

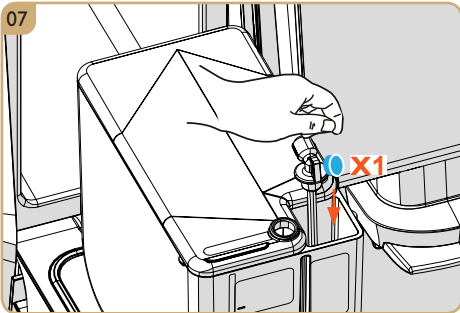
FMU cleaning

06



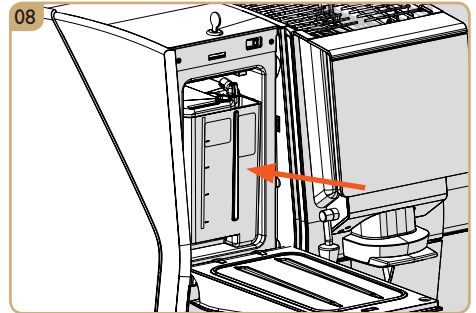
▲ Place the milk container on the door (A) and insert the dip tube into the cleaning vessel (B).

07



▲ Add one cleaning tablet to the cleaning vessel.

08



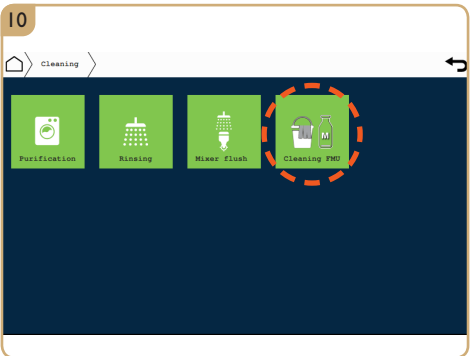
▲ Replace the milk container fully into the fridge.

09



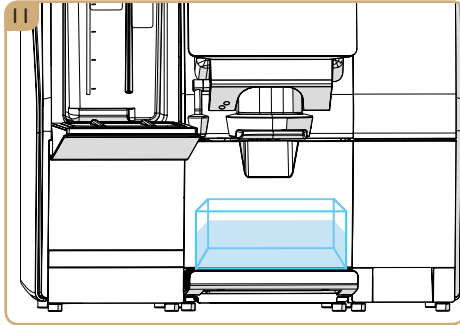
▲ Press the Cleaning icon to access the cleaning options.

10

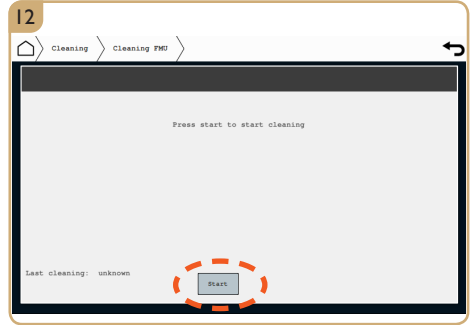


▲ Press the Cleaning FMU icon.

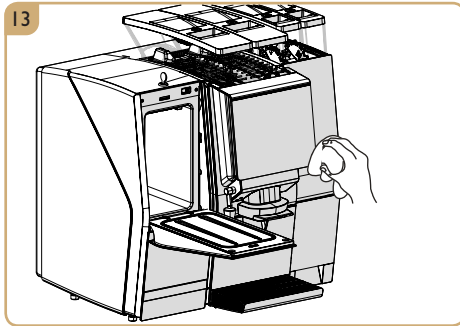
FMU cleaning



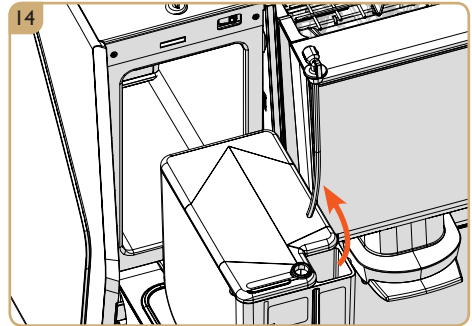
▲ Place an empty 1L container under the outlet.



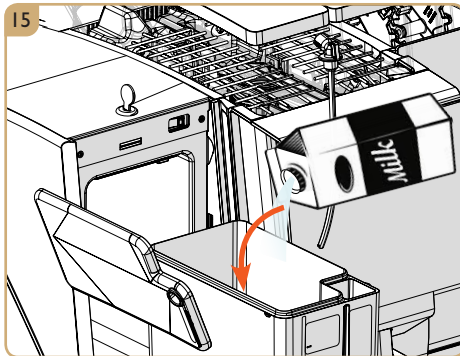
▲ Press Start, follow on screen instructions.



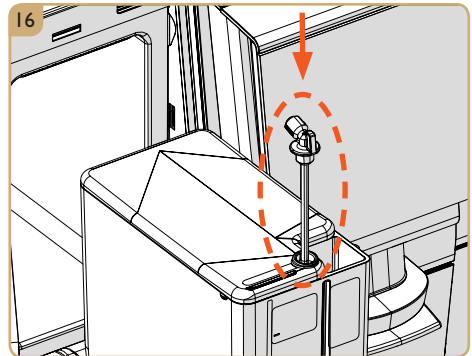
▲ To save time during FMU cleaning, wipe exterior surfaces and interior of FMU.



▲ After cleaning is finished, remove the dip tube from the cleaning vessel.



▲ Fill the milk container with fresh milk.

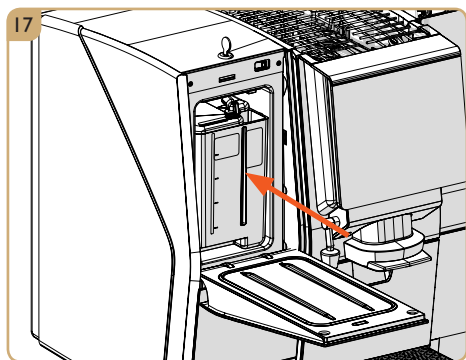


▲ Replace the dip tube into the milk container.

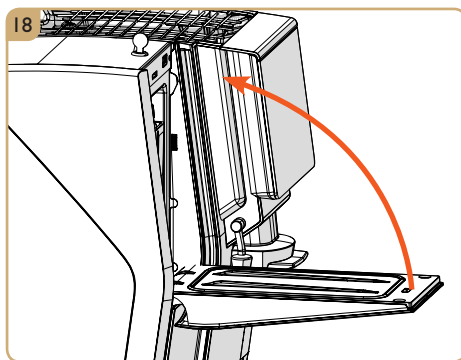


CAUTION:
Cleaning water is very hot!

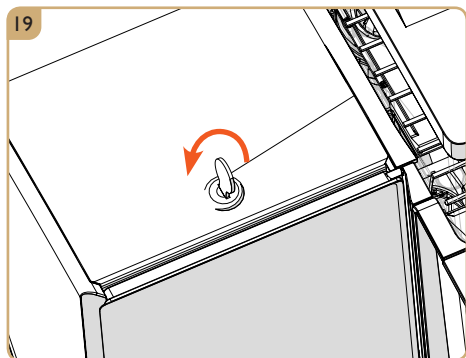
FMU cleaning



▲ Replace the milk container fully into the fridge.

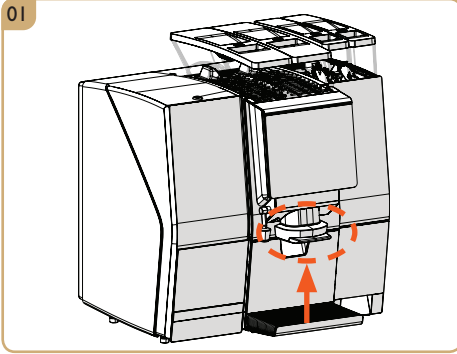


▲ Close the door.

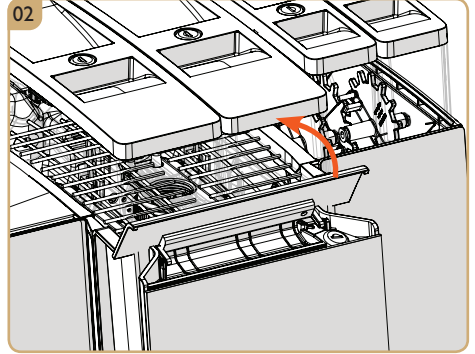


▲ Lock the door.

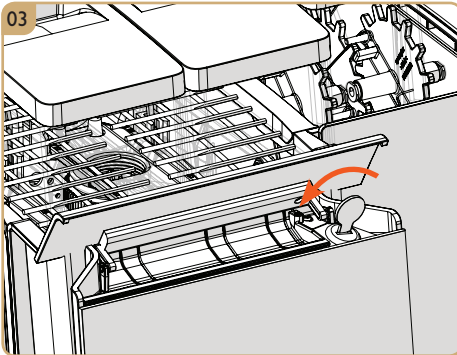
Clean brewers with tablet



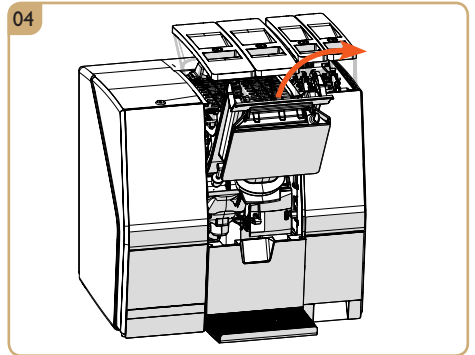
▲ Adjust the spout to the top position.



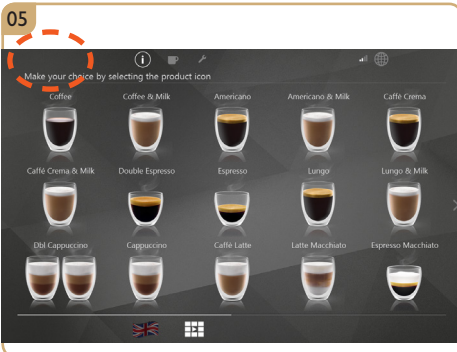
▲ Open the door lock access cover.



▲ Unlock the door.



▲ Raise the door to the highest position.



▲ Press top right corner to access Service Menu.



▲ Input the Service Menu password. (Password is available from the distributor.)

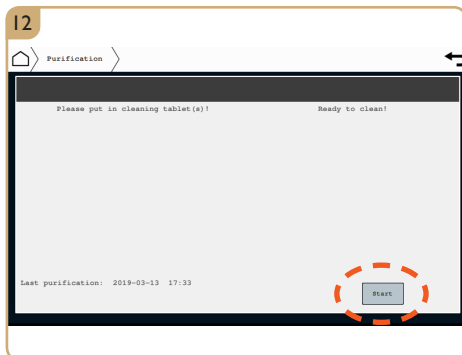
Clean brewers with tablet



▲ Press Program to access the short-cut cleaning menu.



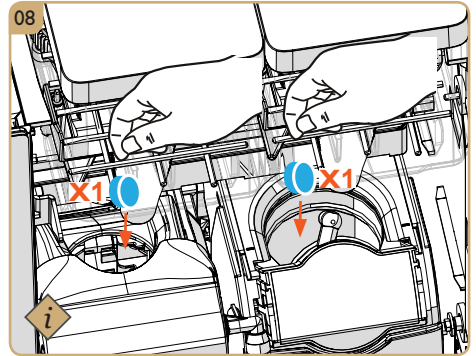
▲ Press the Purification icon.



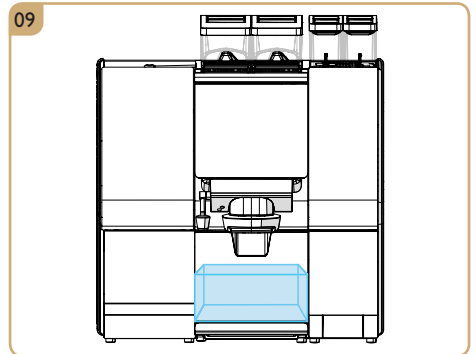
▲ Press Start, follow on screen instructions.



CAUTION:
Cleaning water is very hot!



▲ Add one cleaning tablet to each brewer.



▲ Close the door. Place an empty 1L container under the outlet.



*Cafiza E-22
cleaning tablets
(Art. #: 10037458)*



Note:

The FMU has been designed and tested to be cleaned **ONLY** with the detergent tablet listed. Use of any other cleaning tablet is not advised as it may result damage to the brewing system or cause residue to persist in the brewer after cleaning and rinsing if finished.

Dispenser error messages

The following error messages may be displayed as a result of a fault in the coffee or instant ingredient systems.

Error Code:	Error Explanation:	Required Action:
EC_1	General system fault	Contact technician for repair.
EC_2	No machine connected	
EC_3	Machine not ready	
EC_5	Internal error	
ECM	Program memory error	
ECD_01 ECD_02	No communication with PCB75395	
ECD_5	No communication with PCB75623 (hydraulic board)	
ECE_2	Slave I/O at address #2 does not respond	
ECIG_2	Slave I/O at address #2 does not completely support protocol	
EFG	Boiler is not completely filled	
EGN	Drip tray full	Empty drip tray.
EGM	Drip tray not present	Replace drip tray.
EFZ_6	Sensor-reading out-of-range	Contact technician for repair.
EFC_8	No flow detected	Check that water is turned on at the mains connection. If yes, then contact technician for repair.
EFZ_9	Element not detected (STB!)	Contact technician for repair.
EFZ_11	Triac not activated	
EFZ_12	Triac not de-activated	
EFZ_13	Purification program has not been successful completed	Purification program has not been successful completed
EFB_3	Airbreak empty	Contact technician for repair.
EFB_4	Airbreak valve defect	
EFB_5	Airbreak sensors swapped	

Dispenser error messages

The following error messages may be displayed as a result of a fault in the coffee or instant ingredient systems.

Error Code:	Error Explanation:	Required Action:
ELE_1	Grinder-1 has no beans left	Add coffee.
ELE_2	Grinder-2 has no beans left	Add coffee.
ELE_5	Grinder-1 blocked	Contact technician for repair.
ELE_6	Grinder-2 blocked	
ECB_01	Too much current in circuit-1 (detected by software)	
ECB_02	Too much current in circuit-2 (detected by software)	
ECB_03	Too much current in circuit-3 (door board or STUMv06+ door circuit)	
ECB_11	Too much current in circuit-1 (detected by hardware)	
ECB_12	Too much current in circuit-2 (detected by hardware)	
ECB_14	Too much current in circuit-1 on Slave-IOboard (detected by hardware)	
ECB_15	Too much current in circuit-2 on Slave-IOboard (detected by hardware)	
ECC_06	Too much current: Brewer-2 motor	
ECC_07	Too much current: Brewer-2 wiper	
ECC_08	Too much current: Canister-1 motor	
ECC_09	Too much current: Canister-2 motor	
ECC_10	Too much current: Canister-3 motor	
ECC_11	Too much current: Canister-4 motor	
ECC_12	Too much current: Brewer-1 motor	

Dispenser error messages

The following error messages may be displayed as a result of a fault in the coffee or instant ingredient systems.		
Error Code:	Error Explanation:	Required Action:
ECC_13	Too much current: Brewer-1/2 motor or Brewer-1/2 wiper	Contact technician for repair.
ECC_14	Too much current: Brewer-1 wiper	
ECC_15	Too much current: ES brewer valve	
ECC_17	Too much current: Fan	
ECC_32	Too much current: inlet-valve	
EJ_I	Protocol out of sequence	
EOA	Failed sensor or incorrect reading	
EJB	Error dispense motor	
EJM	Cannot communicate with motor pcba	
EJE	The drum mechanism does not turn correctly	
EJM	An error has been detected in the product delivery system	

FMU error messages

The following error messages may be displayed as a result of a fault in the FMU system.

Error Code:	Error Explanation:	Required Action:
0	Gear pump not connected.	Contact technician for repair.
2	Gear pump friction is too high.	
10	Air valve not connected.	
12	Water valve not connected.	
14	Milk valve not connected.	
16	Cleaning valve not connected.	
18	Water flush valve not connected.	
20	Water flow not detected.	Check that water is turned on at the mains connection. If yes, then contact technician for repair.
24	Temperature sensor mixing block detects water too warm.	Contact technician for repair.
25	Temperature sensor mixing block detects water too warm.	
27	Descaling was aborted.	Restart FMU cleaning program (be sure to add tablet).
35	FTH not heating.	Contact technician for repair.
36	FTH not connected.	
37	EEPROM failure.	
46	FTH temperature too high.	
50	Cleaning aborted by MCB, no tablet detected.	Restart FMU cleaning program (be sure to add tablet).
51	Cleaning calendar invalid.	Contact technician to reset cleaning calendar in Service Menu.
52	Clock timer invalid, FMU not synced to Main module.	Contact technician for repair.
53	Cleanshot error.	Restart FMU at main switch. If error persist, contact technician for repair.
55	Cleaning overdue.	Restart FMU cleaning program (be sure to add tablet).
56	Cleanshot aborted.	

For the warranty to be valid the conditions for maintenance must have been followed according to the manufacturer's instructions, proper precaution has been made and warranty claim has been issued without delay.

The affected equipment may not be used while awaiting service if there is any risk that the damage or defect could worsen.

The warranty will not cover consumable supplies such as cups or condiments, normal maintenance such as cleaning of filters, contaminations in water, lime scale, incorrect voltages, pressure or adjustment of water volumes.

The warranty will not cover damages or defects caused by incorrect handling and operation of the appliance.

FOR SERVICE

Please contact your dealer:

crem[®]
INTERNATIONAL

www.creminternational.com